

Case Study

Industrial Quartz Polished Concrete



Museum of Making, Derby

PROJECT DESCRIPTION

Polished concrete flooring was installed within the Museum of Making in Derby, which opened as part of a 10-year, multi-million-pound redevelopment programme. Located within the Derwent Valley Mills UNESCO World Heritage Site, the museum tells the story of over 300 years of innovation and creativity and is regarded as part of the world's first modern factory. The project, housed within a former silk mill, was highly commended in the 'Sustainable Project of the Year' category at the 2021 Construction News Awards.

HATCRETE supplied Flint Industrial Quartz to integrally colour the concrete, creating a consistent finish across the floor while enhancing both durability and visual appeal. The polished finish also provided a highly durable surface capable of withstanding potential flooding.

PROJECT REQUIREMENTS

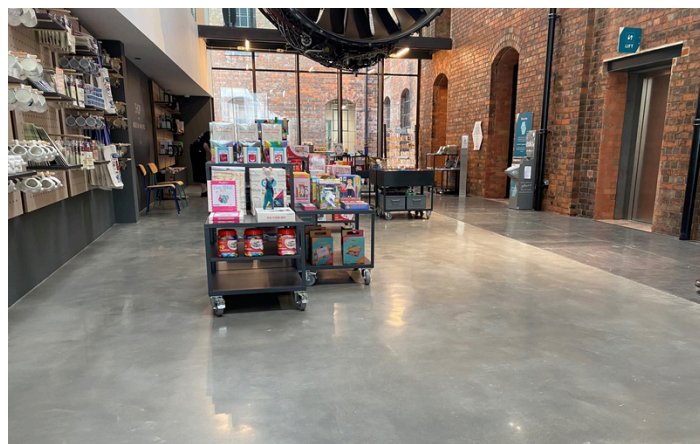
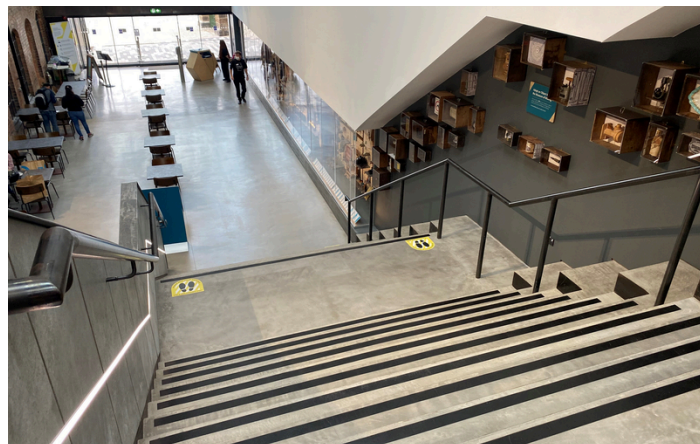
To supply 300m³ of Flint Industrial Quartz for the colouring of the polished concrete floor.

PRODUCTS USED

HATCRETE Industrial Quartz – Flint

PARTICIPANTS

- Client – **Museum of Making - Derby Museums**
- Architect – **Bauman Lyons**
- Main Contractor – **Speller Metcalfe**
- Industrial Quartz Supplier – **HATCRETE**
- Flooring Contractor – **Concrete Polishing UK**
- Concrete Supplier – **Breedon**



SpellerMetcalfe



BAUMAN
LYONS